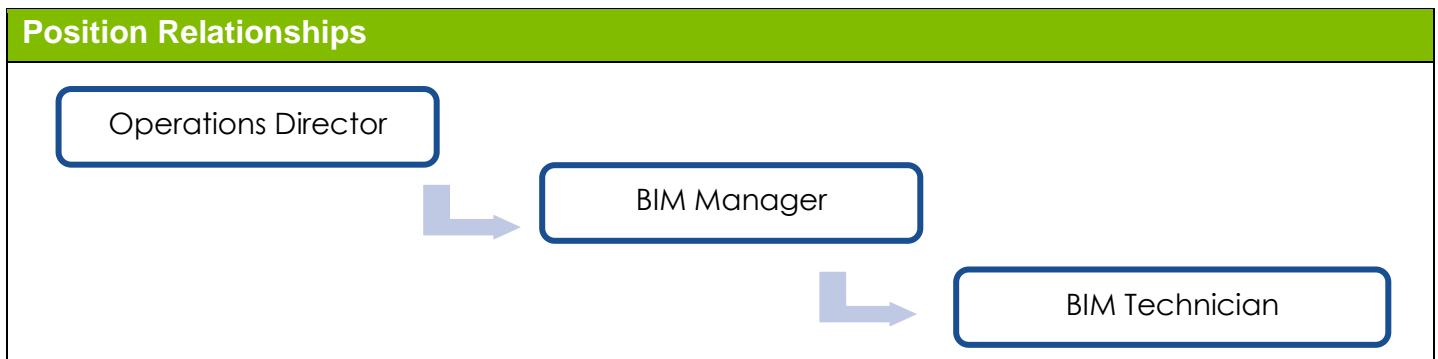


Job Description

Position Description	
Job Title	BIM Technician
Department	CAD
Reporting to:	BIM Manager
Location	Banbridge
Hours	38
Scope of Role	Reporting to the BIM Manager, you will be a key member in a multi-disciplinary and versatile design team. Your skills will be instrumental in delivering high quality Building Information Models using MEP Revit to support the Mechanical and Electrical design on a range of diverse projects within high end Residential, Education, and Commercial sectors



Key Responsibilities
<ul style="list-style-type: none"> • Support the BIM process with projects across the Banbridge office • Acting as BIM Co-ordinator for multiple projects • Take responsibility for the quality of own work, and consider ways of improving work processes • Thorough knowledge of and compliance with Kane Group procedures and standards including all BIM documentation. • Development and standardisation of Kane Group BIM library • Creation of Revit families as required for projects • Assist with Information Management Tasks across projects • Assist with BIM Management and BIM Coordination tasks • QA/QC on BIM projects

Person Specification

	Essential	Desirable
Qualification	5 GCSEs including Maths and English	Possess a suitable qualification within a related discipline related to the CAD / BIM role and have a proven work background within this role or similar
Experience & Knowledge	Proficient in use of REVIT MEP to create coordinated HVAC systems	Minimum of 2 years' experience in a similar role and able to demonstrate the ability to provide BIM/CAD productions to cover project requirements in Design and construction
	Strong experience in having used Revit software	Experience of Dynamo or Navisworks
	Strong knowledge of BIM methodologies and UK BIM standards	Experience working in Construction phase projects
	Able to demonstrate strong skills in the use of Revit including Revit family creation skills with a focus in parametric design	
	Good Autocad skills	
Abilities & Skills	Demonstrate ability to provide BIM/CAD production to cover project requirements for Design and construction.	
	Excellent organisational skills and the ability to prioritise own workload. Developed problem solving skills, including the ability to manage conflicting work demands	
	Capacity to work independently with limited supervision	

	Demonstrates a strong customer orientation	
	Possess excellent interpersonal and communication skills including the ability to liaise and advise staff at all levels.	
	Can deliver high quality work with excellent attention to detail	
	Good communication skills, both written and verbal with good presentation and interpersonal skills	
	To be flexible and work as part of a team	
	Able to work under pressure and meet short deadlines	
	Must be very 'hands on' with can do attitude	