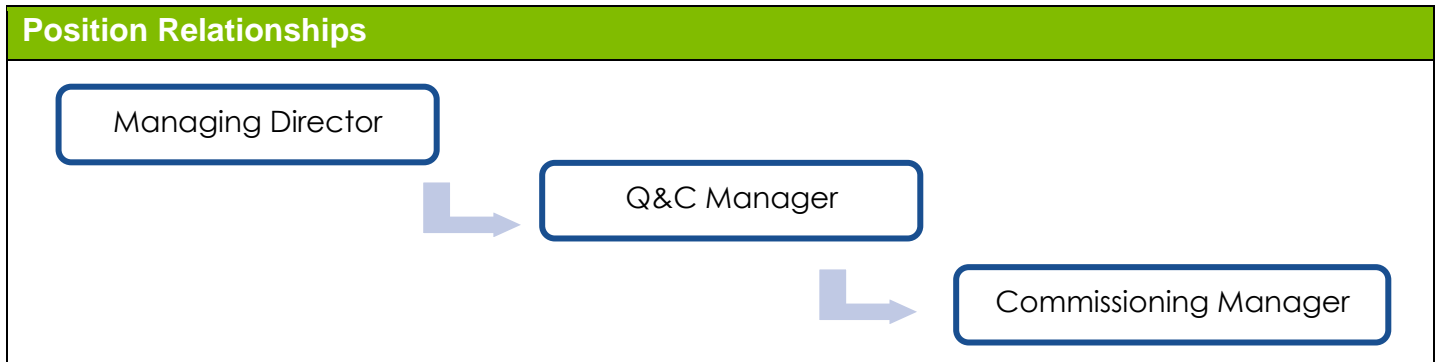


## Job Description

Position Description	
<b>Job Title</b>	Project Commissioning Manager
<b>Department</b>	Quality & Commissioning
<b>Reporting to:</b>	Quality & Commissioning Manager
<b>Location</b>	London
<b>Hours</b>	40
<b>Scope of Role</b>	Manage the commissioning processes across domestic & commercial projects



Key Responsibilities
<ul style="list-style-type: none"> <li>• Take overall responsibility for the day to day management of all M&amp;E commissioning activities on the project/projects, to ensure successful completion of these activities against the programme</li> <li>• Management of the specialist subcontractors</li> <li>• Regular reporting and meeting attendance, where you are computer literate</li> <li>• Dealing with the client and its representative in a professional and positive manner and represent the company in a best practice setting</li> <li>• Review/approve concise commissioning method statements</li> <li>• Witness on site testing and report on findings</li> <li>• Review and comment on quality of M&amp;E install during the installation phase</li> <li>• Interface with the utility companies</li> <li>• Management of water treatment</li> <li>• Review and comment on design of services in association with the specific discipline</li> <li>• To maintain positive relationships with other staff and professional team members, along with your line manager</li> <li>• Managing the trade contractors' obligations to commission and manage the delivery of the specific services, in association with our scope of works</li> <li>• Co-ordination, integration, and management of commission/testing</li> </ul>

## Person Specification

	Essential	Desirable
<b>Qualification</b>	Industry recognized qualification in Mechanical and/or Electrical installation/engineering	CSA Level 4 or above
	SMSTS	
<b>Experience &amp; Knowledge</b>	Experience in the commissioning of Domestic and Commercial systems	3+ Years' experience as a commissioning manager
<b>Abilities &amp; Skills</b>	Ability to understand system complexities to ensure the correct resource and development areas are allocated accordingly	Full UK driving license
	Must have substantial project management experience	
	Ability to manage progress and delivery of fixes against timelines and overall cost benefits (time/performance/money).	
	Hands on experience in Mechanical and Electrical installation/commissioning activities	
	Flexible with Excellent team working skills	
	Highly developed organizational skills and ability to multi task	
	Good computer software skills required (particularly, Microsoft Excel & Outlook)	
	Strong problem - solving skills with a tenacity to work through high volume information to resolve discrepancies that may arise	

	Possess excellent interpersonal and communication skills including the ability to liaise and advise staff at all levels	
	A professional and assertive manner to deal with external and internal enquires	
	Results focused and strives to protect and achieve their own goals and deadlines. Able to work under pressure and meet short deadlines	
	A strong work ethic and must be very 'hands on' with can do attitude	